



AML Anlagentechnik GmbH

Company Profile



Company

Management

Matthias Leeke



Carola Leeke



Sebastian
Bartholomäus



We have been a Haver & Boecker partner for over 20 years.



Since November 2022 we are part of the Haver & Boecker group and are their plant construction specialist for building materials.



AML Anlagentechnik GmbH

Karl-Witte-Straße 2
06258 Schkopau / OT Lochau
Germany

Telephone +49 345 7779859-0
Fax +49 345 7779859-99
e-mail info@aml-bulktechnology.de
web www.aml-bulktechnology.de



Partnerunternehmen im





Markets





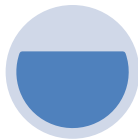
AML Anlagentechnik: The specialist for plant construction in the Haver-Boecker-Group



Engineering

Design
Calculation
Planning
Optimization

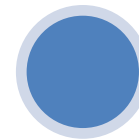
Complete basic and detail engineering



Supply

Crushing & Milling Plants
Dry Mix Mortar Plants
Paste Production Plants
Dust Collection equipment

Own production or approved suppliers



Service

Assembly
Supervision
Commissioning
After Sales

Reliable personnel always available

**More than 30 joint projects between Haver and
AML during the last 20 years**

Target Applications



DMP: cement based



Building chemicals



DMP: gypsum based



Dust removal technology



Sand preparation



Paste production



Engineering

Feasibility studies, including

- Energy efficiency and performance analysis
- Reconstruction and renovation studies

Process design

- Process layout and flow diagram
- Plant overview drawings

Structural design

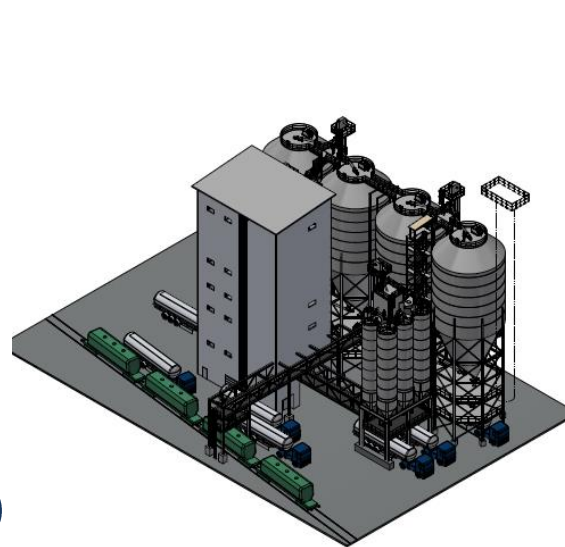
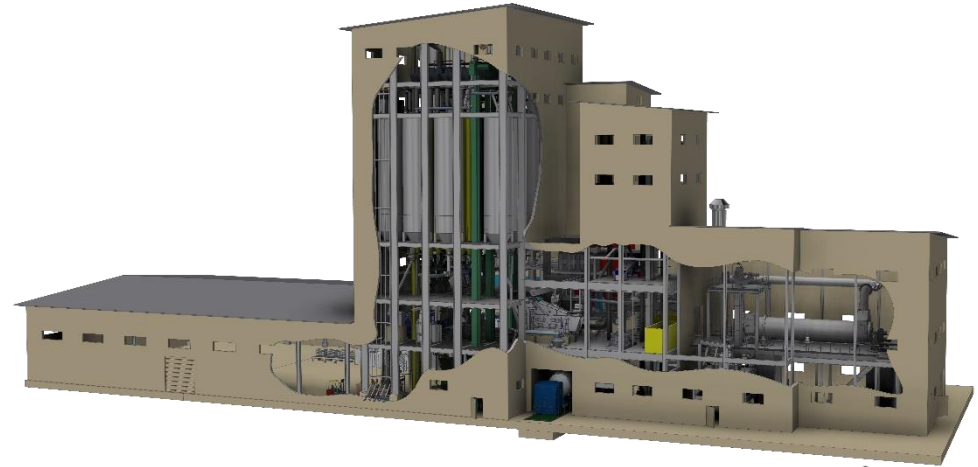
- Equipment and machine installation plans
- Workshop drawings
- Static calculations

Electrical and compressed air systems

- Tank and pipeline layout
- Plant control system
- Machine and instruments lists

Construction and design management

- Risk assessment (e.g. Directive 2006/42EG)
- Health and safety instructions (e.g. HSE)
- Explosion protection documents (e.g. ATEX)





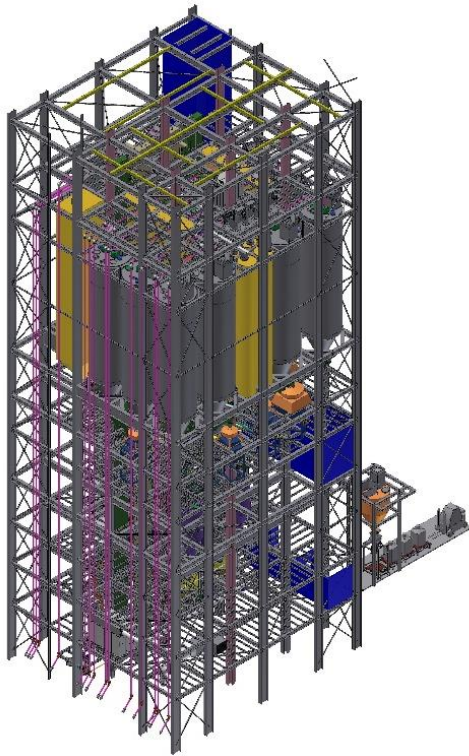
Plant Construction

- AML supplies to complete set of equipment in order to feed the packing machine with building materials including the sand preparation
- **There is a life above the packing machine**
- Standard solution: Mixing tower
- Mixing plants with reduced height
- Mixing plant in a warehouse



References: Mixing Tower

Dry mortar plant: “Nevinnomysk”



Turn key delivery of the plant including:

- Sand preparation unit
- Mixing plant

Production capacity: 75 t/h

- **41 raw materials storage and handling**
 - Main components
 - Additives
 - Lightweight aggregates and fibers
- **7 scales**
- **4 production targets**
 - 2 Packing lines for paper-valve bags
 - 1 Big-Bags packing line
 - Bulk loading unit





Mixing Tower in an earthquake area

Turn key delivery of the plant:

- Customer: Grenzebach, Germany
- Location: Region Caucasus, Russia

The plant is located in an earthquake area

- Production capacity: 60 t/h gypsum based products
- 24 raw material storage and handling





References: Mixing Tower with reduced height

Delivery of a dry mortar and building chemicals plant

- Customer: IBS/ Mapei, Dubai

Plant construction - of a single source:

- Engineering design
- Coordination of the various providers
- Delivery of the plant components
- Supervision of the local assembly crew
- Clarification of all local details with local subcontractors
- Commissioning

Special features

- Delivery of the raw materials (six different components) from big bags
- Transportation of raw materials by pneumatic conveying technology
- Transportation of dry mortar with belt conveyors





Dry Mortar Plant in a Warehouse



Customer: Rethmisch GmbH,
Möllenhagen/Deutschland

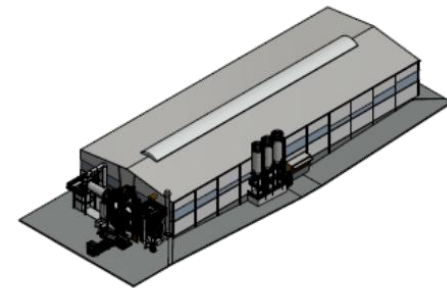
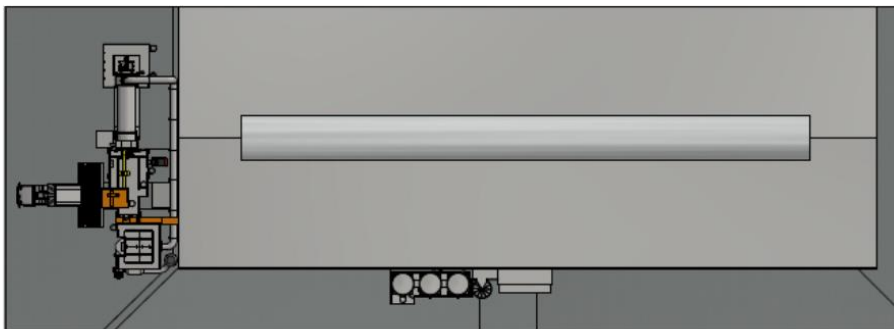
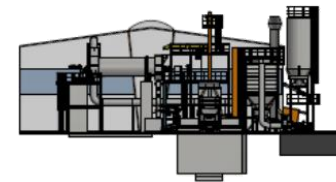
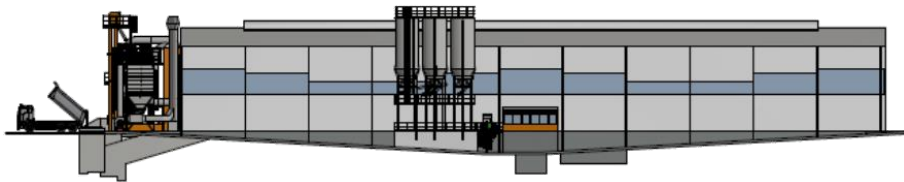
Project Scope:
Modification of an existing concrete batching
plant to a dry mortar plant with a capacity of
30t/h

Completion: Juli 2021



Dry Mortar Plant in a Warehouse: 12 m high

Layout of the Mixing Plant





Dry Mortar Plant in a Warehouse

After Conversion of the Mixing Plant



References: Sand & Dry mortar plant “Jakarta”

Turn key delivery of the plant including:

- Sand preparation plant
- Mixing plant

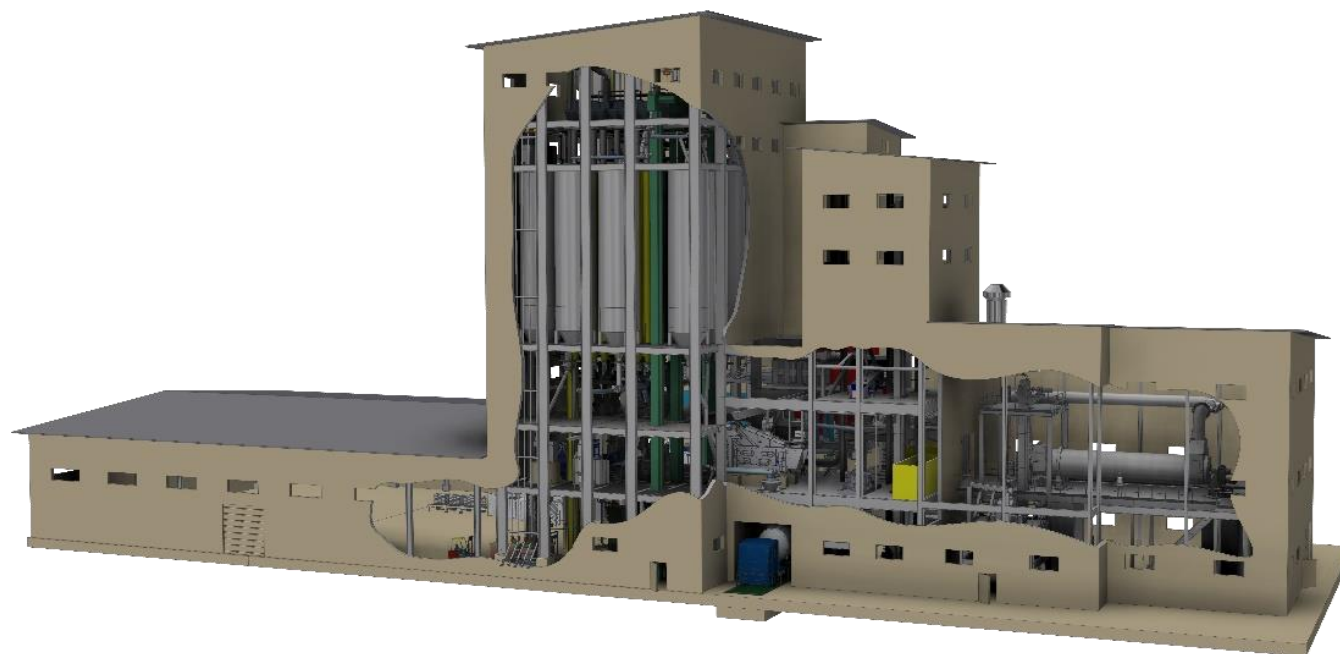
Production capacity: 50 + 12 t/h

- **raw materials storage and handling**
 - 16 Main component silos
 - 16 Additive silos
- **7 scales**
- **3 production targets**
 - 2 Packing lines for paper-valve bags
 - 4 Bulk loading silos



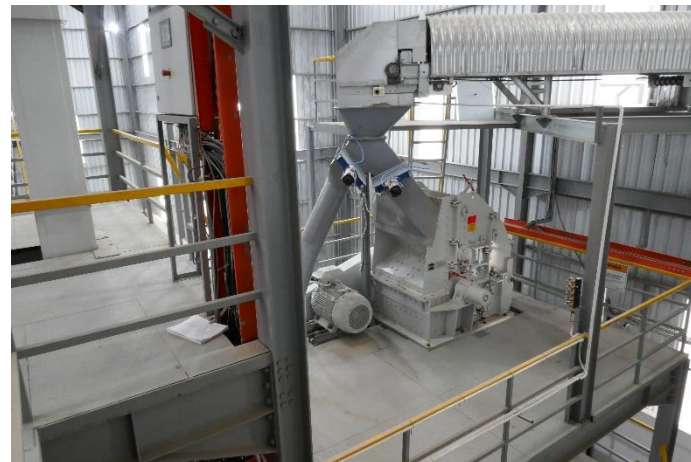


Sand & Dry mortar plant “Jakarta”





Sand & Dry mortar plant “Jakarta”



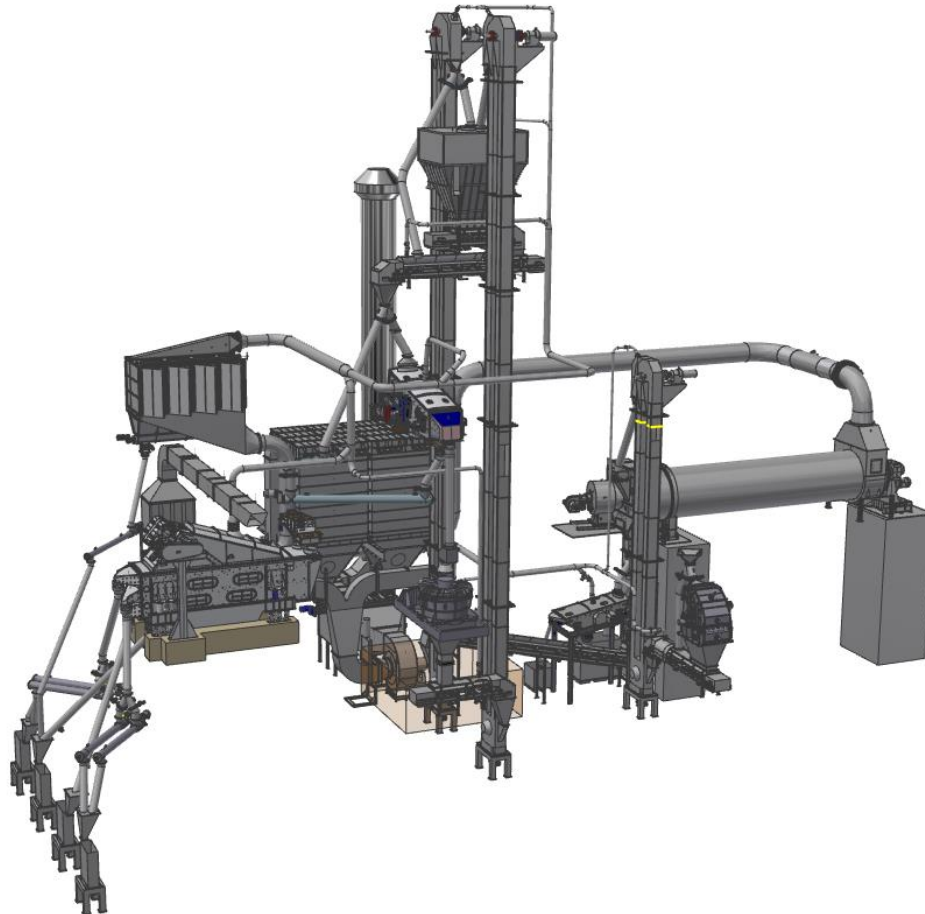


Sand & Dry mortar plant “Jakarta”





Sand & Dry mortar plant “Jakarta”



Installation and Commissioning

Complete installation

- Own personnel and specialized partners
- Mechanical und electrical

Project and site management

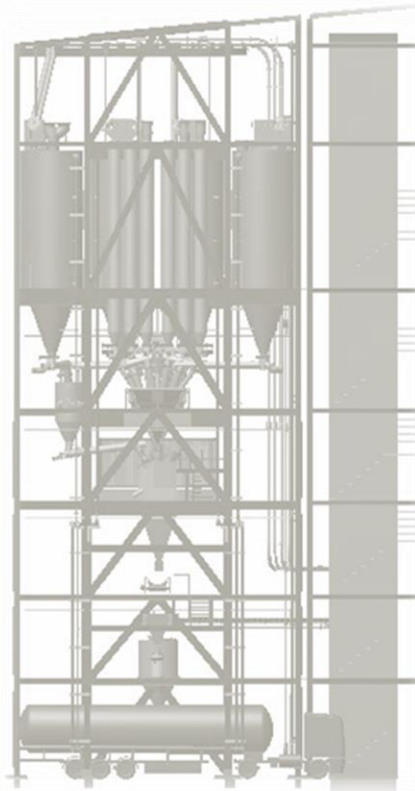
- Coordination and monitoring
- Site supervision
- Contractor coordination

Assembly and commissioning

- Assembly and supervision
- Commissioning
- Performance tests

Training

- Control system simulation
- Mechanical components
- During plant operation and in AML



The right partner: AML

As specialists we focus on our target applications

- With our know-how we create unique solutions
- We include your individual ideas
- If economies of scale is the issue, we do it most cost-effective

We're flexible and open for your needs and requirements

- We can do pneumatic dosing, but we don't need to
- We can select the machine of your preference
- We do engineering or turn key supply, whatever is necessary!

We make tailor made solutions economical

- Efficiency is our aim. It's no contingency.
- We combine cost-effectiveness with custom made solutions!
- Solutions according to your needs and requirements





Thank you for your attention!

AML Anlagentechnik GmbH

info@aml-bulktechnology.de

+49 345 7779859-0

www.aml-bulktechnology.de